

TOSHIBA
Leading Innovation >>>

TRANSDUCERS

for
ULTRASOUND
SYSTEMS

TRANSDUCERS

TOSHIBA MEDICAL SYSTEMS CORPORATION

<http://www.toshibamedicalsystems.com>

©Toshiba Medical Systems Corporation 2006-2015. All rights reserved.
Design and specifications subject to change without notice.
MCAUS0168EAH 2015-12 TMSC/D

Toshiba Medical Systems Corporation meets internationally recognized standards for Quality Management System ISO 9001, ISO 13485.

Toshiba Medical Systems Corporation Nasu Operations meets the Environmental Management System standard ISO 14001.

Artida, Viamo, Aplio and Xario are trademarks of Toshiba Medical Systems Corporation.

Printed in Japan

TRANSDUCERS

Aplio 500_{V6.0}

Aplio 400_{V6.0}

Aplio 300_{V6.0}



Sector

PST-25BT

Frequency	2.5 MHz
Frequency Range	4.2 – 1.8 MHz
Frequency Range (THI)	4.0 – 2.0 MHz
Field of View Angle	Approx. 90°
Application	Heart
Biopsy Adapter	680-106 (TG-2)

PST-30BT

Frequency	3.0 MHz
Frequency Range	4.8 – 2.0 MHz
Frequency Range (THI)	4.4 – 2.8 MHz
Field of View Angle	Approx. 90°
Application	Heart
Biopsy Adapter	680-106 (TG-2)

PST-50BT

Frequency	5.0 MHz
Frequency Range	6.0 – 3.0 MHz
Frequency Range (THI)	6.2 – 4.4 MHz
Field of View Angle	Approx. 90°
Application	Pediatric Heart

PST-65AT

Frequency	6.5 MHz
Frequency Range	8.5 – 4.2 MHz
Frequency Range (THI)	9.0 – 5.0, d9.0, d7.0 MHz
Field of View Angle	Approx. 90°
Application	Pediatric heart, Neonatal head

Convex

PVT-375BT

Frequency	3.5 MHz
Frequency Range	6.0 – 1.9 MHz
Frequency Range (THI)	6.0 – 3.0, d5.0 MHz
Field of View Angle	Approx. 70°
Application	Abdomen
Fusion Adapter	Included UIFR-A500A
Biopsy Adapter	680-105 (TG-1)

PVT-375SC

Frequency	3.5 MHz
Frequency Range	6.0 – 1.9 MHz
Frequency Range (THI)	6.0 – 3.0, d5.0, d3.0 MHz
Field of View Angle	Approx. 70°
Application	Abdomen
Fusion Adapter	Included UIFR-A500A
Biopsy Adapter	680-105 (TG-1)

PVT-382BT

Frequency	3.5 MHz
Frequency Range	5.0 – 1.8 MHz
Frequency Range (THI)	5.0 – 2.8, d5.0 MHz
Field of View Angle	Approx. 80°
Application	Abdomen
Fusion Adapter	UAFS-001A
Biopsy Adapter	UAGV-027A, 680-110

PVT-674BT

Frequency	6.0 MHz
Frequency Range	9.2 – 3.6 MHz
Frequency Range (THI)	8.0 – 6.0, d8.0 – d5.0 MHz
Field of View Angle	Approx. 65°
Application	Abdomen
Biopsy Adapter	UAGV-028A

Convex

PVT-712BT

Frequency	7.0 MHz
Frequency Range	10.2 – 4.2 MHz
Frequency Range (THI)	10.0 – 6.0, d11.0 – d8.0 MHz
Field of View Angle	Approx. 100°
Application	Neonatal head, Pediatric
Biopsy Adapter	680-127 (TG-7)

Linear

PLT-604AT

Frequency	6.0 MHz
Frequency Range	9.2 – 4.0 MHz
Frequency Range (THI)	7.6 – 5.8, d8.0, d6.0 MHz
Field of View width	Approx. 38 mm
Application	Peripheral Vascular
Biopsy Adapter	680-107 (TG-3)
Water bag kit	UAWB-021A

PLT-704AT

Frequency	7.5 MHz
Frequency Range	11.0 – 5.0 MHz
Frequency Range (THI)	8.4 – 6.2, d9.0, d8.0 MHz
Field of View width	Approx. 38 mm
Application	Peripheral Vascular
Biopsy Adapter	680-107 (TG-3)
Water bag kit	UAWB-021A

PLT-704SBT

Frequency	7.5 MHz
Frequency Range	11.0 – 4.8 MHz
Frequency Range (THI)	8.4 – 6.2, d9.0, d8.0 MHz
Field of View width	Approx. 38 mm
Application	Peripheral Vascular Small parts
Biopsy Adapter	680-107 (TG-3)

PLT-705BT

Frequency	7.0 MHz
Frequency Range	11.0 – 4.8 MHz
Frequency Range (THI)	8.4 – 6.2, d9.0, d8.0 MHz
Field of View width	Approx. 45 mm
Application	Vascular
Biopsy Adapter	680-129 (TG-8)

PLT-805AT

Frequency	8.0 MHz
Frequency Range	12.0 – 6.2 MHz
Frequency Range (THI)	9.0 – 6.6, d9.0, d8.0 MHz
Field of View width	Approx. 58 mm
Application	Small parts
Biopsy Adapter	680-109 (TG-6)
Water bag kit	UAWB-022A

Linear

PLT-1005BT

Frequency	10 MHz
Frequency Range	12.0 – 7.0 MHz
Frequency Range (THI)	11.0 – 7.0, d14.0, d10.0 MHz
Field of View width	Approx. 58 mm
Application	Small parts
Fusion Adapter	UAFS-004A
Biopsy Adapter	680-109 (TG-6)
Water bag kit	UAWB-022A

PLT-1202S

Frequency	12.0 MHz
Frequency Range	14.0 – 7.0 MHz
Frequency Range (THI)	14.0 – 8.0, d18.0 – d13.0 MHz
Field of View width	Approx. 25 mm
Application	Intra-operative, MSK

PLT-1204BT

Frequency	12.0 MHz
Frequency Range	14.0 – 7.2 MHz
Frequency Range (THI)	14.0 – 8.0, d18.0 – d13.0 MHz
Field of View width	Approx. 38 mm
Application	Peripheral vascular, Small parts
Biopsy Adapter	680-102 (TG-4)
Sono Coupler	UACK-003A

PLT-1204BX *

Frequency	12.0 MHz
Frequency Range	14.0 – 7.2 MHz
Frequency Range (THI)	14.0 – 8.0, d18.0 – d13.0 MHz
Field of View width	Approx. 38 mm
Application	Peripheral vascular, Small parts
Biopsy Adapter	680-102 (TG-4)

Endocavity

PVT-781VT

Frequency	7.0 MHz
Frequency Range	9.0 – 4.0 MHz
Frequency Range (THI)	10.0 – 6.0, d11.0 – d7.0 MHz
Field of View Angle	Approx. 180°
Application	Endovaginal, Endorectal
Fusion Adapter	UAFS-003A
Biopsy Adapter	UAGV-035A, 680-121

PVT-781VTE

Frequency	7.0 MHz
Frequency Range	9.0 – 4.0 MHz
Frequency Range (THI)	10.0 – 6.0, d11.0 – d7.0 MHz
Field of View Angle	Approx. 180°
Application	Endovaginal, Endorectal (Long type of PVT-781VT)
Fusion Adapter	UAFS-006A
Biopsy Adapter	UAGV-035A, 680-121

* Only for Aplio500

TRANSDUCERS

TRANSDUCERS

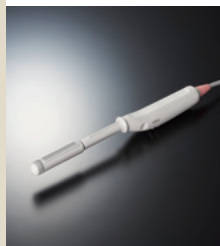
Aplio 500_{V6.0}

Aplio 400_{V6.0}

Aplio 300_{V6.0}

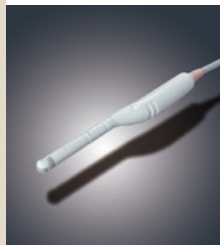
Endorectal

PVL-715RST



Frequency	7.5 MHz
Frequency Range	10 – 5.0 MHz
Frequency Range (THI)	9.2 – 7.0, d10.0, d8.0 MHz
Field of View Width	Approx. 56 mm
Field of View Angle	Approx. 170°
Application	Endorectal (Convex+Linear)
Fusion Adapter	UAFS-005A
Biopsy Adapter	UAGL-001AHA, UAGL-002AHA

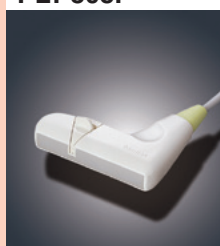
PVT-770RT



Frequency	7.0 MHz
Frequency Range	10.0 – 5.0 MHz
Frequency Range (THI)	9.2 – 7.0, d10.0, d8.0 MHz
Field of View Angle	Approx. 170°
Application	Endorectal (Convex+Convex)
Biopsy Adapter	UAGV-023A, 680-093

Biopsy

PLT-308P *



Frequency	3.75 MHz
Frequency Range	5.7 – 3.1 MHz
Frequency Range (THI)	5.5 – 3.6 MHz
Field of View Width	Approx. 85 mm
Application	Abdomen
Biopsy Adapter	UAGL004A (Included in purchase transducer)

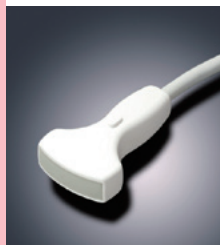
PVT-350BTP *



Frequency	3.5 MHz
Frequency Range	6.0 – 1.9 MHz
Frequency Range (THI)	6.0 – 3.0, d5.0 MHz
Field of View Angle	Approx. 70°
Application	Abdomen
Fusion Adapter	UAFS-002A
Biopsy Adapter	UAGV-030A (Included in purchase transducer)

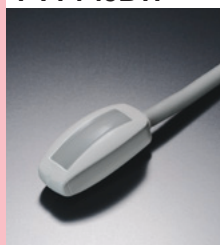
Intra-operative

PVT-745BTB



Frequency	7.0 MHz
Frequency Range	11.0 – 4.0 MHz
Frequency Range (THI)	9.0 – 5.8, d10.0 MHz
Field of View Angle	Approx. 40°
Application	Abdomen, Small parts
Biopsy Adapter	UAGV-029A

PVT-745BTF



Frequency	7.0 MHz
Frequency Range	11.0 – 4.0 MHz
Frequency Range (THI)	9.0 – 5.8, d10.0, d8.0 MHz
Field of View Angle	Approx. 40°
Application	Abdomen

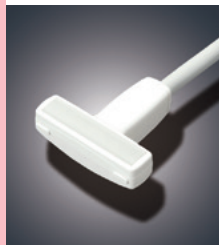
Intra-operative

PVT-745BTH



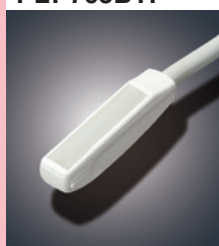
Frequency	7.0 MHz
Frequency Range	11.0 – 4.0 MHz
Frequency Range (THI)	9.0 – 5.8, d10.0, d8.0 MHz
Field of View Angle	Approx. 40°
Application	Abdomen
Biopsy Adapter	UAGV-034A

PLT-705BTH



Frequency	7.0 MHz
Frequency Range	11.0 – 4.0 MHz
Frequency Range (THI)	8.4 – 5.0, d9.0, d8.0 MHz
Field of View Width	Approx. 46 mm
Application	Abdomen
Biopsy Adapter	UAGV020A

PLT-705BTF



Frequency	7.0 MHz
Frequency Range	11.0 – 4.0 MHz
Frequency Range (THI)	8.4 – 5.0, d9.0, d8.0 MHz
Field of View Width	Approx. 46 mm
Application	Abdomen
Biopsy Adapter	UAGV020A

Laparoscopic

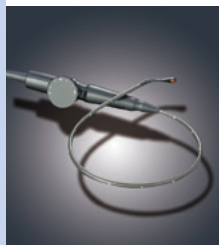
PET-805LA



Frequency	8.0 MHz
Frequency Range	11.2 – 4.0 MHz
Frequency Range (THI)	8.4 – 5.0, d9.0, d8.0 MHz
Insertion Section Length	Approx. 40 cm
Internal diameter of trocars	ø 12 mm
Field of View Width	Approx. 45 mm

Transesophageal

PET-508MA



Frequency	5.0 MHz
Frequency Range	6.5 – 3.0 MHz
Frequency Range (THI)	6.6 – 4.4 MHz
Insertion Section Length	750 mm
Diameter of the flexible part	ø 7.2 mm
Field of View Angle	Approx. 90°
Application	Heart

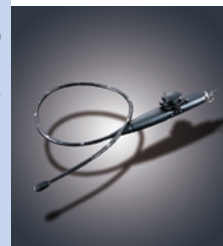
PET-512MA *



Frequency	5.0 MHz
Frequency Range	7.5 – 2.5 MHz
Frequency Range (THI)	7.0 – 3.5 MHz
Insertion Section Length	1100 mm
Diameter of the flexible part	ø 11 mm
Field of View Angle	Approx. 90°
Application	Heart

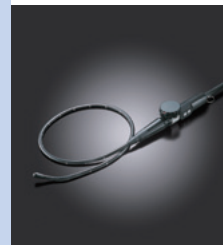
Transesophageal

PET-511BTM *



Frequency	5.0 MHz
Frequency Range	7.5 – 2.5 MHz
Frequency Range (THI)	7.0 – 3.5 MHz
Insertion Section Length	1070 mm
Diameter of the flexible part	ø 9.4 mm
Field of View Angle	Approx. 90°
Application	Heart

PET-512MC



Frequency	5.0 MHz
Frequency Range	7.5 – 2.5 MHz
Frequency Range (THI)	7.0 – 3.5 MHz
Insertion Section Length	1100 mm
Diameter of the flexible part	ø 11 mm
Field of View Angle	Approx. 90°
Application	Heart

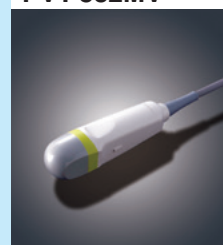
4D

PVT-375MV



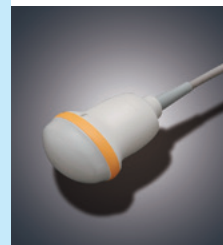
Frequency	3.5 MHz
Frequency Range	6.0 – 1.9 MHz
Frequency Range (THI)	6.0 – 3.0, d5.0 MHz
Field of View Angle	Approx. 73°
Application	Abdomen
Biopsy Adapter	UAGV-033A

PVT-382MV



Frequency	3.5 MHz
Frequency Range	5.5 – 1.8 MHz
Frequency Range (THI)	5.0 – 2.8, d5.0 MHz
Field of View Angle	Approx. 82°
Application	Abdomen
Biopsy Adapter	UAGV-032A

PVT-675MV



Frequency	6.0 MHz
Frequency Range	7.2 – 2.8 MHz
Frequency Range (THI)	7.0 – 4.0, d6.0, d5.0 MHz
Field of View Angle	Approx. 73°
Application	Abdomen

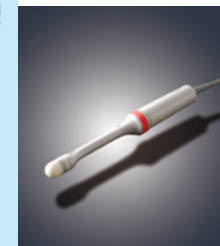
PVT-675MVL



Frequency	6.0 MHz
Frequency Range	7.2 – 2.8 MHz
Frequency Range (THI)	8.0 – 4.0, d6.0, d5.0 MHz
Field of View Angle	Approx. 66°
Application	Abdomen

4D

PVT-681MV



Frequency	6.0 MHz
Frequency Range	8.8 – 4.7 MHz
Frequency Range (THI)	8.0 – 6.0, d7.0, d6.0 MHz
Field of View Angle	Approx. 160°
Application	Endovaginal, Endorectal
Biopsy Adapter	UAGV-031A, 680-114

PVT-681MVL



Frequency	6.0 MHz
Frequency Range	9.0 – 4.0 MHz
Frequency Range (THI)	10.0 – 6.0, d11.0 – d7.0 MHz
Field of View Angle	Approx. 180°
Application	Endovaginal, Endorectal
Biopsy Adapter	680 – 131

PLT-1204MV



Frequency	12.0 MHz
Frequency Range	14.0 – 7.2 MHz
Frequency Range (THI)	14.0 – 8.0, d14.0, d13.0 MHz
Field of View Width	Approx. 38 mm
Application	Peripheral vascular, Small parts
Biopsy Adapter	UAGL-015A

Pencil

PC-20M



Frequency	2.0 MHz
Application	Heart CW only

PC-50M



Frequency	5.0 MHz
Application	Heart, Peripheral vascular Pediatric, CW only



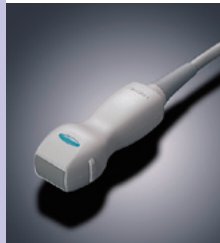
Xario™ 200 V4.0

Xario™ 100 V4.0



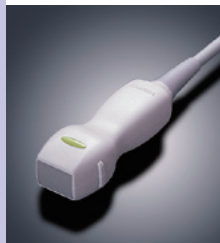
Sector

PSU-25BT 5S1



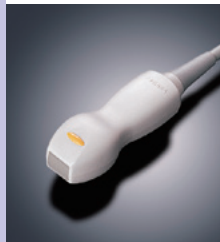
Frequency	2.5 MHz
Frequency Range	4.2 – 1.8 MHz
Frequency Range (THI)	4.0 – 2.0 MHz
Field of View Angle	Approx. 90°
Application	Heart
Biopsy Adapter	680-106 (TG-2)

PSU-30BT 5S2



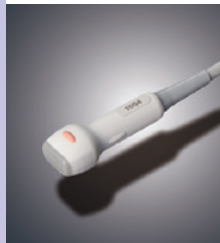
Frequency	3.0 MHz
Frequency Range	4.8 – 2.0 MHz
Frequency Range (THI)	4.4 – 2.8 MHz
Field of View Angle	Approx. 90°
Application	Heart
Biopsy Adapter	680-106 (TG-2)

PSU-50BT 6S3



Frequency	5.0 MHz
Frequency Range	6.0 – 3.0 MHz
Frequency Range (THI)	6.2 – 4.4 MHz
Field of View Angle	Approx. 90°
Application	Heart

PSU-70BT 10S4



Frequency	7.0 MHz
Frequency Range	8.5 – 4.2 MHz
Frequency Range (THI)	9.0 – 5.0 MHz, d9.0, d7.0 MHz
Field of View Angle	Approx. 90°
Application	Pediatric heart, Neonatal head

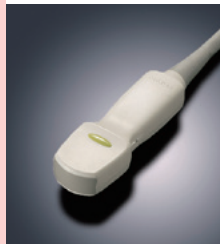
Convex

PVU-375BT 6C1



Frequency	3.5 MHz
Frequency Range	6.0 – 1.9 MHz
Frequency Range (THI)	6.0 – 3.0, d5.0 MHz
Field of View Angle	Approx. 70°
Application	Abdomen
Biopsy Adapter	680-105 (TG-1)

PVU-382BT 6MC1



Frequency	3.5 MHz
Frequency Range	5.5 – 1.8 MHz
Frequency Range (THI)	5.0 – 2.8, d5.0 MHz
Field of View Angle	Approx. 80°
Application	Abdomen
Biopsy Adapter	UAGV-027A, 680-110

Convex

PVU-674BT 10C3



Frequency	6.0 MHz
Frequency Range	9.2 – 3.6 MHz
Frequency Range (THI)	8.0 – 6.0, d8.0 – d5.0 MHz
Field of View Angle	Approx. 65°
Application	Abdomen
Biopsy Adapter	UAGV-028A

PVU-712BT 11MC4



Frequency	7.0 MHz
Frequency Range	10.2 – 4.2 MHz
Frequency Range (THI)	10.0 – 6.0, d11.0 – d8.0 MHz
Field of View Angle	Approx. 110°
Application	Neonatal head, Pediatric
Biopsy Adapter	680-127 (TG-7)

Linear

PLU-704BT 11L4



Frequency	7.0 MHz
Frequency Range	11.0 – 4.8 MHz
Frequency Range (THI)	8.4 – 6.2, d9.0, d8.0 MHz
Field of View width	Approx. 38 mm
Application	Peripheral vascular
Biopsy Adapter	680-107 (TG-3)
Water bag kit	UAWB-021A

PLU-1005BT 14L5



Frequency	10 MHz
Frequency Range	12.0 – 7.0 MHz
Frequency Range (THI)	11.0 – 7.0, d14.0, d10.0 MHz
Field of View width	Approx. 58 mm
Application	Small parts
Biopsy Adapter	680-109 (TG-6)
Water bag kit	UAWB-022A

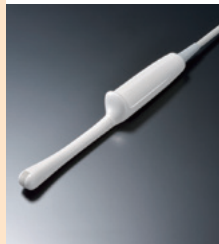
PLU-1204BT 18L7



Frequency	12.0 MHz
Frequency Range	14.0 – 7.2 MHz
Frequency Range (THI)	14.0 – 8.0, d18.0 – d13.0 MHz
Field of View width	Approx. 38 mm
Application	Small parts
Biopsy Adapter	680-102 (TG-4)
Sono Coupler	UACK-003A

Endocavity

PVU-781VT 11C3 *1



Frequency	7.0 MHz
Frequency Range	9.0 – 4.0 MHz
Frequency Range (THI)	10.0 – 6.0, d11.0 – d7.0 MHz
Field of View Angle	Approx. 180°
Application	Endovaginal, Endorectal
Biopsy Adapter	UAGV-035A, 680-121

Endocavity

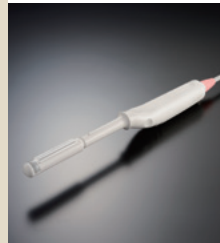
PVU-781VTE 11C3



Frequency	7.0 MHz
Frequency Range	9.0 – 4.0 MHz
Frequency Range (THI)	10.0 – 6.0, d11.0 – d7.0 MHz
Field of View Angle	Approx. 180°
Application	Endovaginal, Endorectal (Long type of PVU-781VT)
Biopsy Adapter	UAGV-035A, 680-121

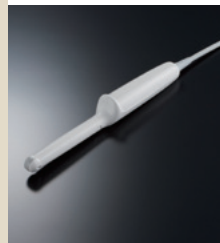
Endorectal

PVL-715RS 11CL4



Frequency	7.5 MHz
Frequency Range	10 – 5.0 MHz
Frequency Range (THI)	9.2 – 7.0, d10.0, d8.0 MHz
Field of View Width	Approx. 56 mm
Field of View Angle	Approx. 170°
Application	Endorectal (Convex+Linear)
Biopsy Adapter	UAGL-001AHA, UAGL-002AHA

PVU-770ST 11C4



Frequency	7.5 MHz
Frequency Range	10.0 – 5.0 MHz
Frequency Range (THI)	9.2 – 7.0, d10.0, d8.0 MHz
Field of View Angle	Approx. 170°
Application	Endorectal
Biopsy Adapter	UAGV-036A, 680-117

Biopsy

PVU-350BTP 6CP1 *1 *2



Frequency	3.5 MHz
Frequency Range	6.0 – 1.9 MHz
Frequency Range (THI)	6.0 – 3.0, d5.0 MHz
Field of View Angle	Approx. 70°
Application	Abomen
Biopsy Adapter	UAGV-030A (Included in purchase transducer)

Intra-operative

PVU-745BTV 11CI4



Frequency	7.0 MHz
Frequency Range	11.0 – 4.0 MHz
Frequency Range (THI)	9.0 – 5.8, d10.0 MHz
Field of View Angle	Approx. 40°
Application	Abdomen, Small parts
Biopsy Adapter	UAGV-029A

PVU-745BTF 11CI4 *1



Frequency	7.0 MHz
Frequency Range	11.0 – 4.0 MHz
Frequency Range (THI)	9.0 – 5.8, d10.0, d8.0 MHz
Field of View Angle	Approx. 40°
Application	Abdomen

PVU-745BTH 11CI4 *1



Frequency	7.0 MHz
Frequency Range	11.0 – 4.0 MHz
Frequency Range (THI)	9.0 – 5.8, d10.0, d8.0 MHz
Field of View Angle	Approx. 40°
Application	Abdomen
Biopsy Adapter	UAGV-034A

Laparoscopic

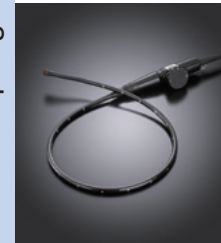
PET-805LA *1



Frequency	8.0 MHz
Frequency Range	11.2 – 4.0 MHz
Frequency Range (THI)	8.4 – 5.0, d9.0, d8.0 MHz
Insertion Section Length	Approx. 40 cm
Internal diameter of trocars	ø 12 mm
Field of View Width	Approx. 45 mm

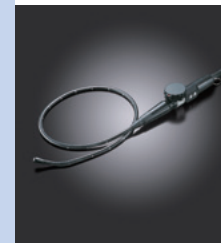
Transesophagus

PET-512MA *1 *2



Frequency	5.0 MHz
Frequency Range	7.5 – 2.5 MHz
Frequency Range (THI)	7.0 – 3.5 MHz
Insertion Section Length	1100 mm
Diameter of the flexible part	ø 11 mm
Field of View Angle	Approx. 90°
Application	Heart

PET-512MC *1



Frequency	5.0 MHz
Frequency Range	7.5 – 2.5 MHz
Frequency Range (THI)	7.0 – 3.5, d7.0 – d3.5 MHz
Insertion Section Length	1100 mm
Diameter of the flexible part	ø 11 mm
Field of View Angle	Approx. 90°
Application	Heart

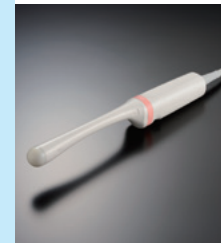
4D

PVU-674MV 8CV2



Frequency	6.0 MHz
Frequency Range	7.2 – 2.8 MHz
Frequency Range (THI)	7.0 – 4.0, d6.0, d5.0 MHz
Field of View Angle	Approx. 70°
Application	Abdomen

PVU-681MVL 11CV3



Frequency	6.0 MHz
Frequency Range	9.0 – 4.0 MHz
Frequency Range (THI)	10.0 – 6.0, d11.0 – d7.0 MHz
Field of View Angle	Approx. 180°
Application	Endocavity 4D
Biopsy Adapter	680-131

Pencil

PC-20M



Frequency	2.0 MHz
Application	Heart CW only

PC-50M



Frequency	5.0 MHz
Application	Heart, Peripheral vascular Pediatric, CW only

TRANSDUCERS

TRANSDUCERS

*1 Not available for Xario100 MX-Edition
*2 Not available in the USA and Canada



Artida™

V3.2

Sector

PST-25SX



Frequency	2.5 MHz
Frequency Selection	3.0 – 2.0 MHz
Frequency Selection (THI)	4.0 – 2.0 MHz
Field of View Angle	Approx. 90°
Application	Heart

PST-25BT



Frequency	2.5 MHz
Frequency Selection	4.2 – 1.8 MHz
Frequency Selection (THI)	4.0 – 2.0 MHz
Field of View Angle	Approx. 90°
Application	Heart
Biopsy Adapter	680-106 (TG-2)

PST-30BT



Frequency	3.0 MHz
Frequency Selection	4.8 – 2.0 MHz
Frequency Selection (THI)	4.4 – 2.4 MHz
Field of View Angle	Approx. 90°
Application	Heart
Biopsy Adapter	680-106 (TG-2)

PST-50BT



Frequency	5.0 MHz
Frequency Selection	6.0 – 3.0 MHz
Frequency Selection (THI)	6.2 – 4.4 MHz
Field of View Angle	Approx. 90°
Application	Pediatric heart
Biopsy Adapter	—

PST-65AT



Frequency	6.5 MHz
Frequency Selection	8.5 – 4.2 MHz
Frequency Selection (THI)	9.0 – 5.0 MHz
Field of View Angle	Approx. 90°
Application	Pediatric heart, neonatal head
Biopsy Adapter	—

Linear

PLT-704AT



Frequency	7.5 MHz
Frequency Selection	11.0 – 5.0 MHz
Frequency Selection (THI)	8.4 – 6.2, d9.0, d8.0 MHz
Field of View width	Approx. 38 mm
Application	Peripheral vascular, small parts
Biopsy Adapter	680-107 (TG-3)
Water bag kit	UAWB-021A

PLT-704SBT



Frequency	7.5 MHz
Frequency Selection	11.0 – 4.8 MHz
Frequency Selection (THI)	8.4 – 6.2, d9.0, d8.0 MHz
Field of View width	Approx. 38 mm
Application	Peripheral vascular, small parts
Biopsy Adapter	680-107 (TG-3)

Convex

PVT-375BT



Frequency	3.5 MHz
Frequency Selection	6.0 – 1.9 MHz
Frequency Selection (THI)	6.0 – 3.0, d5.0 MHz
Field of view angle	Approx. 70°
Application	Abdomen
Biopsy Adapter	680-105 (TG-1)

Transesophagus

PET-508MA



Frequency	5.0 MHz
Frequency Selection	6.5 – 3.0 MHz
Frequency Selection (THI)	6.6 – 4.4 MHz
Insertion section length	750 mm
Diameter of the flexible part	ø 7.2 mm
Field of view angle	Approx. 90°
Application	Heart

PET-511BTM *



Frequency	5.0 MHz
Frequency Selection	7.5 – 2.5 MHz
Frequency Selection (THI)	7.0 – 3.5 MHz
Insertion section length	1070 mm
Diameter of the flexible part	ø 9.4 mm
Field of view angle	Approx. 90°
Application	Heart

PET-512MC



Frequency	5.0 MHz
Frequency Selection	7.5 – 2.5 MHz
Frequency Selection (THI)	7.0 – 3.5 MHz
Insertion section length	1100 mm
Diameter of the flexible part	ø 11 mm
Field of view angle	Approx. 90°
Application	Heart

Pencil

PC-20M



Frequency	2.0 MHz
Application	Heart CW only



Viamo™

V5.0

Sector

PST-25ST



Frequency	2.5 MHz
Frequency Selection	2.5 – 1.8 MHz
Frequency Selection (THI)	4.2 – 2.0 MHz
Field of view angle	Approx. 90°
Application	Heart
Biopsy Adapter	680-106 (TG-2)

PST-50BT



Frequency	5.0 MHz
Frequency Selection	6.0 – 3.0 MHz
Frequency Selection (THI)	5.8 – 4.4 MHz
Field of View Angle	Approx. 90°
Application	Pediatric heart
Biopsy Adapter	—

Convex

PVT-375ST



Frequency	3.5 MHz
Frequency Selection	6.0 – 1.9 MHz
Frequency Selection (THI)	6.0 – 4.0 MHz
Field of view angle	Approx. 70°
Application	Abdomen
Biopsy Adapter	680-105 (TG-1)

PVT-382BT



Frequency	3.5 MHz
Frequency Selection	5.5 – 1.8 MHz
Frequency Selection (THI)	5.0 – 2.8 MHz
Field of view angle	Approx. 80°
Application	Abdomen
Biopsy Adapter	UAGV-027A, 680-110

PVT-674BT



Frequency	6.0 MHz
Frequency Selection	9.2 – 3.6 MHz
Frequency Selection (THI)	8.0 – 6.0 MHz
Field of view angle	Approx. 65°
Application	Abdomen
Biopsy Adapter	UAGV-028A

PVT-712BT



Frequency	7.0 MHz
Frequency Selection	10.2 – 4.2 MHz
Frequency Selection (THI)	10.0 – 6.0 MHz
Field of view angle	Approx. 110°
Application	Neonatal head, Pediatric
Biopsy Adapter	—

Linear

PLT-704AT



Frequency	7.5 MHz
Frequency Selection	11.0 – 6.2 MHz
Frequency Selection (THI)	8.4 – 6.6 MHz
Field of view width	Approx. 38 mm
Application	Peripheral vascular
Biopsy Adapter	680-107 (TG-3)
Water bag kit	UAWB-021A

Linear

PLT-704ST



Frequency	7.5 MHz
Frequency Selection	11.0 – 6.2 MHz
Frequency Selection (THI)	8.4 – 6.2 MHz
Field of view width	Approx. 38 mm
Application	Peripheral vascular, small parts
Biopsy Adapter	680-107 (TG-3)

PLT-805AT



Frequency	8.0 MHz
Frequency Selection	12.0 – 6.2 MHz
Frequency Selection (THI)	9.0 – 6.6 MHz
Field of view width	Approx. 58 mm
Application	Small parts, breast
Biopsy Adapter	680-109 (TG-6)
Water bag kit	UAWB-022A

PLT-1204BT/PLT-1204ST



Frequency	12.0 MHz
Frequency Selection	14.0 – 8.0 MHz
Frequency Selection (THI)	14.0 – 7.0 MHz
Field of view width	Approx. 38 mm
Application	Peripheral vascular, small parts
Sono Coupler	UACK-003A
Biopsy Adapter	680-102 (TG-4)

Endocavity

PVT-661VT



Frequency	6.0 MHz
Frequency Selection	8.8 – 3.6 MHz
Frequency Selection (THI)	8.0 – 5.6 MHz
Field of view angle	Approx. 160°
Application	Endovaginal, endorectal
Biopsy Adapter	UAGV-024A

Biopsy

PVT-350BTP *



Frequency	3.5 MHz
Frequency Selection	6.0 – 1.9 MHz
Frequency Selection (THI)	6.0 – 3.0 MHz
Field of View angle	Approx. 70°
Application	Abdomen
Biopsy Adapter	UAGV-030A (Included in purchase transducer)

Intra-operative

PVT-745BTV



Frequency	7.0 MHz
Frequency Selection	11.0 – 6.0 MHz
Frequency Selection (THI)	9.0 – 5.8 MHz
Field of view angle	Approx. 40°
Application	Abdomen
Biopsy Adapter	UAGV-029A

PLT-705BTH



Frequency	7.0 MHz
Frequency Selection	11.0 – 6.0 MHz
Frequency Selection (THI)	8.4 – 5.0 MHz
Field of view width	Approx. 46 mm
Application	Abdomen
Biopsy Adapter	UAGV020A

* Not available in the USA and Canada

TRANSDUCERS

TRANSDUCERS

Biopsy adapters
Water bags
Sono Coupler

Biopsy adapters		UAGL-001AHA UAGL-002AHA PVL-715RS PVL-715RST
		UAGL004A * PLT-308P
		UAGL-015A PLT-1204MV
		UAGV020A PLT-705BTF PLT-705BTH
		UAGV-023A PVT-770RT
		UAGV-024A PVT-661VT
		UAGV-027A PVT-382BT PVU-382BT
Biopsy adapters		UAGV-029A PVT-745BTV PVU-745BTV
		UAGV-030A * PVT-350BTP PVU-350BTP
		UAGV-031A PVT-681MV
		UAGV-032A PVT-382MV
		UAGV-033A PVT-375MV
		UAGV-034A PVT-745BTH PVU-745BTH
		UAGV-035A PVT-781VT PVT-781VTE PVU-781VT PVU-781VTE
Water bags		UAWB-021A PLT-604AT PLT-704AT PLU-704BT
		UAWB-022A PLT-805AT PLT-1005BT PLU-1005BT
Sono coupler		UACK-003A PLT-1204BT PLT-1204ST PLU-1204BT
Biopsy adapters		UAGV-028A PVT-674BT PVU-674BT
		UAGV-036A PVU-770ST

* Included in purchase transducer

Biopsy brackets and needle guides*

	680-105 (TG-1) Supported transducers PVT-375SC PVT-375BT PVU-375BT
Product name Civco multiangle bracket TG series	
	680-127 (TG-7) Supported transducers PVT-712BT PVU-712BT
Product name Civco multiangle bracket TG series	
	680-114 Supported transducers PVT-681MV
Product name Endocavity needle guide	
	680-106 (TG-2) Supported transducers PST-25BT PST-30BT PSU-25BT PSU-30BT
Product name Civco multiangle bracket TG series	
	680-129 (TG-8) Supported transducers PLT-705BT
Product name Civco multiangle bracket TG series	
	680-117 Supported transducers PVU-770ST
Product name Endocavity needle guide	
	680-107 (TG-3) Supported transducers PLT-604AT PLT-704AT PLT-704SBT PLU-704BT
Product name Civco multiangle bracket TG series	
	680-093 Supported transducers PVT-770RT
Product name Reusable bracket	
	680-121 Supported transducers PVT-781VT PVT-781VTE PVU-781VT PVU-781VTE
Product name Endocavity needle guide	
	680-102 (TG-4) Supported transducers PLT-1204BT PLT-1204ST PLT-1204BX PLU-1204BT
Product name Civco single angle bracket TG series	
	680-110 (V027A) Supported transducers PVT-382BT PVU-382BT
Product name Reusable bracket	
	680-131 Supported transducers PVT-681MVL PVU-681MVL
Product name Endocavity needle guide	
	680-109 (TG-6) Supported transducers PLT-805AT PLT-1005BT PLU-1005BT
Product name Civco multiangle bracket TG series	

* Biopsy brackets and needle guides manufactured by CIVCO Medical Solutions can be used together with Toshiba transducers. Use disposable biopsy adapters and needle guides when using these biopsy brackets. For details of the biopsy adapters and needle guides that can be used with each biopsy bracket, contact CIVCO Medical Solutions.