

iCam™

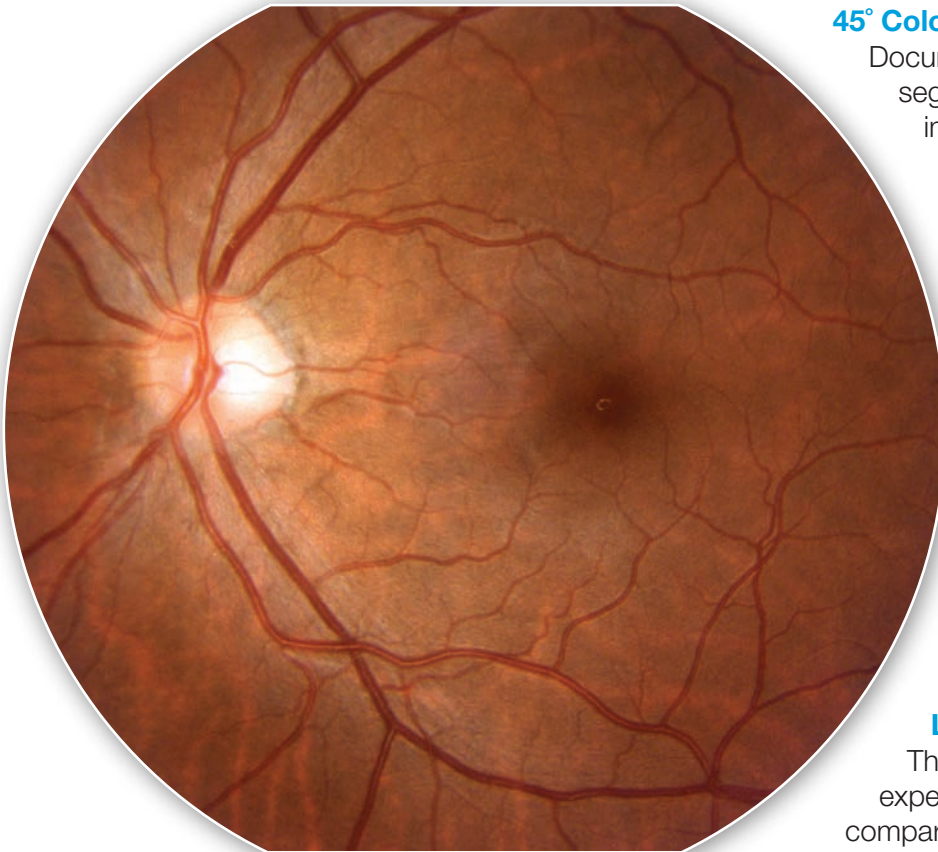


The Affordable, Portable
Non-Mydriatic Fundus Camera Solution

optovue

Quality Images from a Compact System

iCam™ provides rich, deep **color images**
by offering a unique, ***balanced combination of functions***
in a **compact, portable, affordable solution.**



45° Color & Red-Free* Imaging

Document the retina, optic disk and anterior segment with beautiful, detail-rich color images. Red-free images are only one-click away allowing for greater appreciation of structural detail.

Image Sharpening

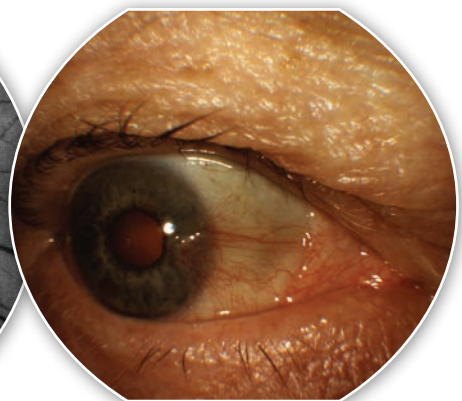
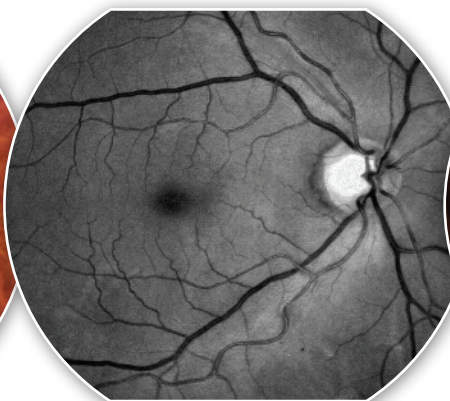
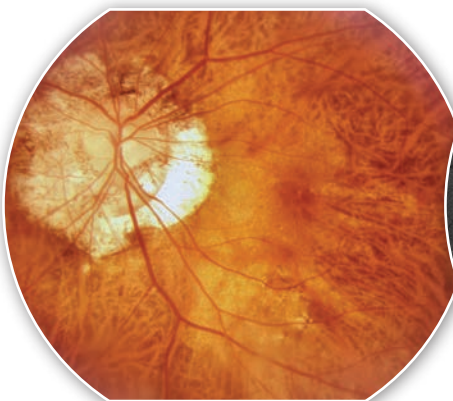
A deconvolution algorithm enhances image detail enabling quality, 5.2 megapixel images for documentation.

12-bit CCD Sensor

The 12-bit CCD sensor provides higher color fidelity saturation, lower noise and 20 times greater tonal range over 8-bit CMOS sensors.

LED Flash

The LED flash light has a longer life expectancy and consumes less power compared to xenon tubes.

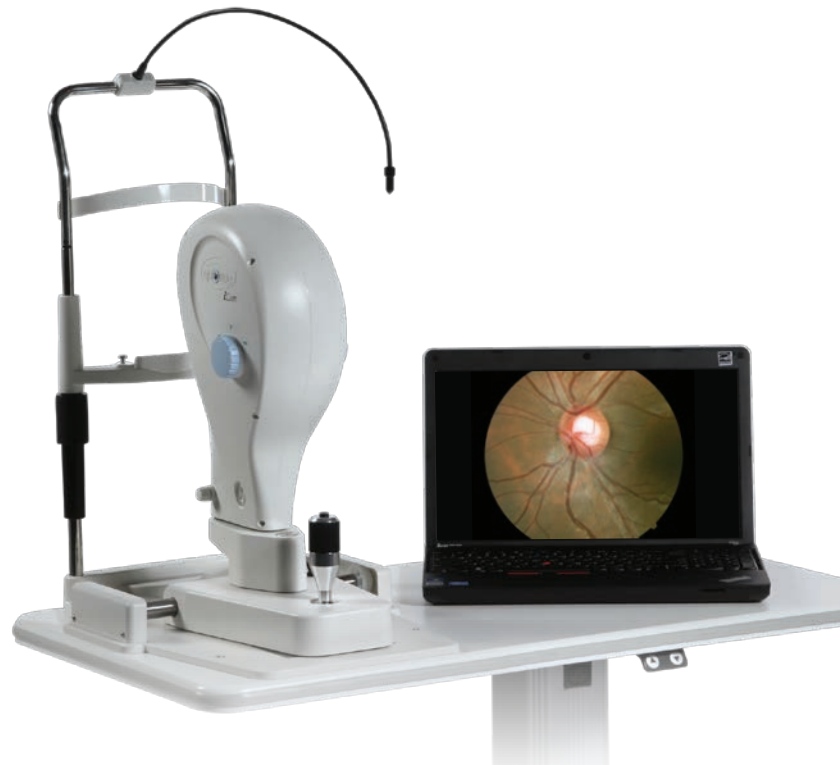


*Performed in the software post-capture.

The Easy Digital Fundus Camera

Simple Operation

Intuitive joystick control as well as focusing and positioning aids allows for quick and efficient photography.



Easy User Interface

The software user interface allows for quick operator training, multiple options for image review and communication with your EMR.



The Affordable, Portable Non-Mydriatic Fundus Camera Solution

SPECIFICATIONS

Field Angle	45°
Image	5.2 Million Pixels
Pupil Diameter	≥4mm
Illumination During Alignment to Patient's Eye	NIR LED
Flash for Retina Image Capture	White LED located inside the instrument at the end of the illumination optical train, synchronized to flash with the capture function
Cornea Image	Illumination from 3 external white LED sources in steady state mode
Total Focus Diopter Adjustment Range	-35D to +30D
Z-ranging (Working Distance)	~25mm
Fixation	6 Internal & one Adjustable External
Focus Adjustment	Manual

