



# Thermo Scientific TriPlus RSH Autosampler

Workflow scalability integrated sampling system



# Thermo Scientific TriPlus RSH Autosampler

The Thermo Scientific™ TriPlus™ RSH Autosampler offers scalable flexibility from simple liquid injection to extended sample preparation. An innovative Automated Tool Change (ATC) station addresses sampling demand and selects the most suitable syringe during a sequence. Up to six different syringes can be programmed in a sequence for extended sample preparation capabilities and different sampling modes (liquid, HS and SPME). Unsurpassed sample handling flexibility combined with high sample capacity, places

no limits even to more stringent productivity requirements. Multiple sample trays increase unattended operation up to 972 × 2 mL vials. The unique Bottom Vial Sensing feature secures the syringe depth positioning in your vial for the last  $\mu\text{L}$  of sample. Nanovolume injections, through the use of plunger-in-needle syringes, can also be programmed in a flexible sequence. All of these, combined with large volume injections, deliver unsurpassed sample handling flexibility.

- **Reliable GC and GC-MS automation**
- **Liquid injection/headspace/SPME, all-in-one unattended sequence**
- **Enhanced productivity and powerful versatility in sample preparation**



# Thermo Scientific Consumables for TriPlus RSH making you productive from day one

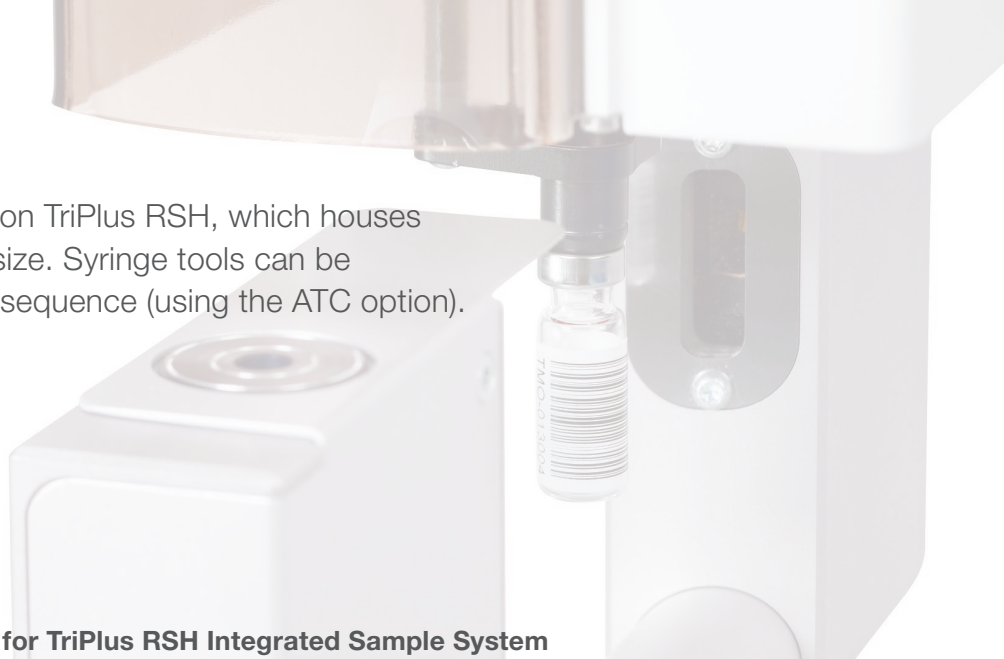
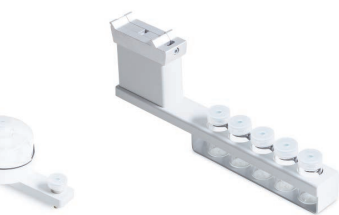


## Syringes for TriPlus RSH

Volume (µL)	Needle Type/Plunger	Length (mm)	Gauge	Tip Style	Application with TRACE™ GC Ultra and FOCUS GC™	Cat. No.	Quantity	TriPlus RSH Syringe Tool
0.5	Removable	57	23	Cone	Split	365A0241	1 Each	D7 57 mm
1	Removable	57	23	Cone	Split	365B0251	1 Each	D7 57 mm
5	Fixed	85	23s	Cone	Merlin Valve SSL injector: splitless	365C0221	1 Each	D7 85 mm
5	Fixed	57	23s	Cone	Merlin Valve injector: PTV and split	365C0231	1 Each	D7 57 mm
5	Fixed	85	26s	Cone	Splitless and OC	365C0241	1 Each	D7 85 mm
5	Fixed	57	26s	Cone	Split and PTV	365C0251	1 Each	D7 57 mm
10	Fixed	85	23s	Cone	Merlin Valve SSL injector: splitless	365D0261	1 Each	D7 85 mm
10	Fixed	57	23s	Cone	Merlin Valve injector: PTV and split	365D0271	1 Each	D7 57 mm
10	Fixed	85	26s	Cone	Splitless and OC	365D0281	1 Each	D7 85 mm
10	Fixed	57	26s	Cone	Split and PTV	365D0291	1 Each	D7 57 mm
10	Fixed, Gas Tight	85	23s	Cone	Merlin Valve SSL injector: splitless	365D0301	1 Each	D7 85 mm
10	Fixed, Gas Tight	57	23s	Cone	Merlin Valve injector: PTV and split	365D0311	1 Each	D7 57 mm
10	Fixed, Gas Tight	85	26s	Cone	Splitless and OC	365D0321	1 Each	D7 85 mm
10	Fixed, Gas Tight	57	26s	Cone	Split and PTV	365D0331	1 Each	D7 57 mm
25	Fixed, Gas Tight	85	23s	Cone	Merlin Valve SSL injector: splitless	365F2431	1 Each	D7 85 mm
25	Fixed, Gas Tight	57	23s	Cone	Merlin Valve injector: PTV and split	365F2441	1 Each	D7 57 mm
25	Fixed, Gas Tight	85	26s	Cone	Splitless and OC	365F2451	1 Each	D7 85 mm
25	Fixed, Gas Tight	57	26s	Cone	Split and PTV	365F2461	1 Each	D7 57 mm
50	Fixed, Gas Tight	57	23s	Cone	Merlin Valve SSL injector: LV splitless	365G2311	1 Each	D7 57mm
50	Fixed, Gas Tight	85	26s	Cone	LV OC	365G2321	1 Each	D7 85 mm
100	Fixed, Gas Tight	57	23s	Cone	Merlin Valve SSL injector: LV splitless	365H2141	1 Each	D7 57 mm
100	Fixed, Gas Tight	85	26s	Cone	LV OC	365H2151	1 Each	D7 85 mm
100	Fixed, Gas Tight	57	26s	Cone	LV splitless	365H2161	1 Each	D7 57 mm
100	Fixed, Gas Tight	85	23	Side Hole	Variable depth LV PTV (w or w/o Merlin)	365H2171	1 Each	D7 85 mm
100	Fixed, Gas Tight	57	23	Side Hole	LV PTV (w/ or w/o Merlin Valve)	365H2181	1 Each	D7 57 mm
250	Fixed, Gas Tight	85	26	Cone	LV OC	365I2321	1 Each	D8 85 mm
250	Fixed, Gas Tight	57	26	Cone	LV splitless	365I2331	1 Each	D8 57 mm
250	Fixed, Gas Tight	85	23	Side Hole	Variable depth LV PTV (w/ or w/o Merlin)	365I2341	1 Each	D8 85 mm
250	Fixed, Gas Tight	57	23	Side Hole	LV PTV (w/ or w/o Merlin Valve)	365I2351	1 Each	D8 57 mm
500	Fixed, Gas Tight	85	26	Cone	LV OC	365J2411	1 Each	D8 85 mm
500	Fixed, Gas Tight	57	26	Cone	Sample dilution	365J2421	1 Each	D8 57 mm
500	Fixed, Gas Tight	85	23	Side Hole	Variable depth LV PTV (w/ or w/o Merlin)	365J2431	1 Each	D8 85 mm
500	Fixed, Gas Tight	57	23	Side Hole	LV PTV (w/ or w/o Merlin Valve)	365J2441	1 Each	D8 57 mm
1000	Fixed, Gas Tight	65	23	Side Hole	Headspace	365Q2121	1 Each	HS tool 1.0 mL
1000	Fixed, Gas Tight	57	22	LC	Sample dilution	365K2811	1 Each	D8 57 mm
2500	Fixed, Gas Tight	65	23	Side Hole	Headspace	365Q2131	1 Each	HS tool 2.5 mL
5000	Fixed, Gas Tight	65	22	Side Hole	Headspace	365Q2141	1 Each	HS tool 5.0 mL
10000	Fixed, Gas Tight	57	19	LC	Sample dilution	365N2721	1 Each	D18 57 mm

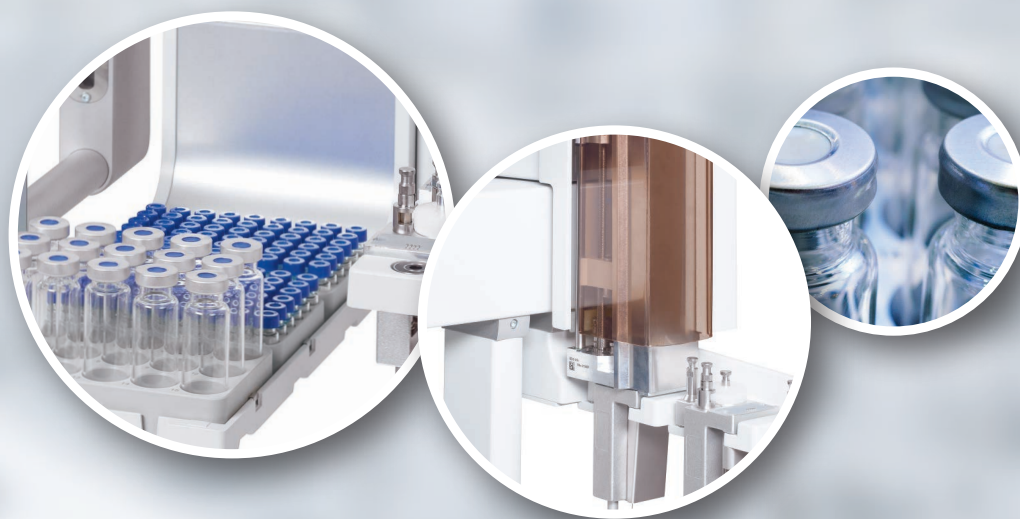


Various syringe tools are available on TriPlus RSH, which houses syringes of different capacity and size. Syringe tools can be automatically exchanged during a sequence (using the ATC option).



## Thermo Scientific Vials and Closures for TriPlus RSH Integrated Sample System

Description	Vial	Cap	Seal	TriPlus RSH Sample Tray	Cat. No.	Quantity
2 mL crimp top vial, clear glass with ID patch and 11 mm blue aluminium cap, blue silicone/red PTFE seal	•	•	•	VT54	<b>60180-597</b>	100 Pack
2 mL screw top vial with 9 mm cap soft blue silicone/clear PTFE seal	•	•	•	VT54	<b>60180-597</b>	100 Pack
2 mL crimp top vial, clear wide mouth with ID patch	•			VT54	<b>60180-502</b>	100 Pack
2.5 mL crimp top vial, clear	•			VT54	<b>60180-503</b>	100 Pack
11 mm aluminium crimp caps with PTFE faced septa		•	•	VT54	<b>60180-526</b>	100 Pack
2 mL screw top vial, clear with ID patch	•			VT54	<b>60180-508</b>	100 Pack
8 mm polypropylene empty open top screw cap		•		VT54	<b>60180-514</b>	100 Pack
8 mm seal, blue silicone/clear PTFE			•	VT54	<b>60180-515</b>	500 Pack
300 µL screw top fixed insert vial, clear with ID patch	•			VT54	<b>60180-507</b>	100 Pack
2 mL wide mouth screw top vial, clear with ID patch	•			VT54	<b>60180-509</b>	100 Pack
9 mm screw cap, blue, prefitted silicone/PTFE seal		•	•	VT54	<b>60180-516</b>	100 Pack
300 µL snap cap fixed insert vial, clear with ID patch	•			VT54	<b>03-FIRV</b>	500 Pack
2 mL snap cap vial, clear with ID patch	•			VT54	<b>2-RV</b>	500 Pack
11 mm PE snap cap, prefitted with a blue silicone/PTFE seal		•	•	VT54	<b>11-PSN(B)-ST101</b>	500 Pack
10 mL crimp top vial, clear	•			VT15/R60	<b>60180-504</b>	125 Pack
20 mL crimp top vial, clear	•			VT15/R60	<b>60180-506</b>	125 Pack
20 mm aluminium crimp cap with PTFE/silicone seal, 3mm thick		•	•	VT15/R60	<b>60180-511</b>	100 Pack
20 mm tin plate (magnetic) and blue aluminium two-part crimp cap with silicone/PTFE seal		•	•	VT15/R60	<b>60180-520</b>	100 Pack
20 mm seal, blue silicone/clear PTFE, 3 mm thick			•	VT15/R60	<b>60180-521</b>	100 Pack
20 mm high temperature seal, red PTFE/white silicone, 3 mm thick			•	VT15/R60	<b>60180-522</b>	100 Pack
20 mm blank aluminium crimp cap		•		VT15/R60	<b>60180-512</b>	100 Pack
20 mm blank tin plate (magnetic) and blue aluminium two-part crimp cap		•		VT15/R60	<b>60180-519</b>	100 Pack
10 mL screw top headspace vial, clear	•			VT15/R60	<b>10-HSV</b>	125 Pack
20 mL screw top headspace vial, clear	•			VT15/R60	<b>20-HSV</b>	125 Pack
18 mm screw cap, magnetic, silicone/PTFE seal, 3mm thick		•	•	VT15/R60	<b>18-MSC-ST3</b>	125 Pack
500 µL crimp top tapered vial, amber	•			VT70	<b>05-CTV(A)</b>	500 Pack
700 µL crimp top tapered vial, clear	•			VT70	<b>07-CPV</b>	500 Pack
8 mm blank cap		•		VT70	<b>8-ACB</b>	1000 Pack
8 mm blue cap with blue silicone/red PTFE seal		•	•	VT70	<b>8-AC(B)-ST144</b>	500 Pack
8 mm cap with white silicone/red PTFE seal		•	•	VT70	<b>8-AC-ST15</b>	500 Pack
8 mm cap with blue silicone/PTFE seal		•	•	VT70	<b>8-AC-ST101</b>	500 Pack



The autosampler Vial Bottom Sensing capability allows accurate withdraw of from a sample as low as 5  $\mu$ L in a vial.

# Resources

## for Chromatographers

### Chromatography Resource Center

Our web-based resource center provides technical support, applications, technical tips and literature to help move your separations forward.

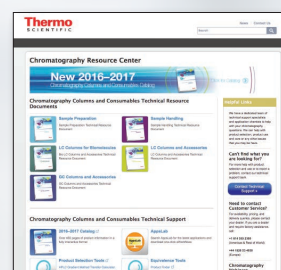
Visit [www.thermofisher.com/sbe](http://www.thermofisher.com/sbe)



### Chromexpert

A dedicated team of technical support specialists and application chemists available to help you with product selection and assistance when using your chromatography consumables. Our experts have access to the latest chromatography technology and will act as your trusted advisors. For application and technical support.

Visit [www.thermofisher.com/chromexpert](http://www.thermofisher.com/chromexpert)



### AppsLab Library

Thermo Scientific™ AppsLab Library of Analytical Applications provides more than 1,300 detailed application examples for the columns listed in the 2016–2017 Chromatography Columns and Consumables Catalog. Search, filter and download complete methods to optimize your separation or implement validated methods using Thermo Scientific™ Dionex™ Chromeleon™ Chromatography Data System (CDS) software. AppsLab Library makes our global application expertise accessible to you—online and downloadable.

Visit [www.thermofisher.com/AppsLab](http://www.thermofisher.com/AppsLab)



For ordering information, please visit  
[thermofisher.com/chromatography](http://thermofisher.com/chromatography)

**ThermoFisher**  
SCIENTIFIC