

OLYMPUS

Your Vision, Our Future

ENDOEYE

VIDEO TELESCOPE

10 MM ENDOEYE

HD image quality as you have never seen before

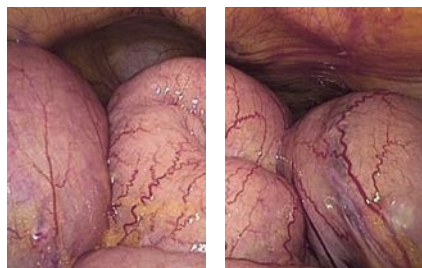


reddot award 2014
winner

Main Features

10 mm HDTV

Best image quality in resolution, providing natural colour reproduction, superior illumination and maximum contrast.



5722

Chip on the Tip

The advanced "Chip on the tip" enables the ENDOEYE to provide bright, clear images.



5686

Focus-Free

Advanced optical design provides greater depth of field eliminating manual focusing. Consistently excellent image with a sharp center and a sharp periphery in 5:4 or 16:9 wide-screen format.



5687

Autoclavability

State of the art reprocessing compatibility: completely autoclavable



Efficiency

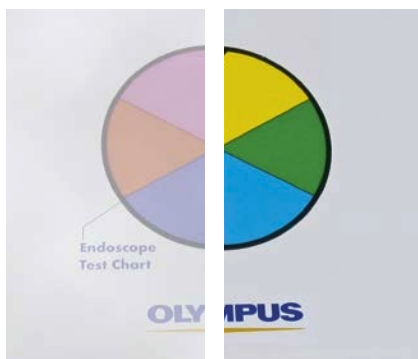
Unrivalled ENDOEYE efficiency for superior handling and maximum surgeon comfort from all-in-one product concept.



5692

Fog-Free

Fog-free feature for clear view from the very beginning of the procedure.



10451

NBI (Narrow Band Imaging)

NBI is an optical image enhancement technology that improves the visualization of vessels and other tissues on the mucosal surface. Only Olympus products feature NBI, which is 20 % brighter compared to previous models.



ENDOEYE HD II

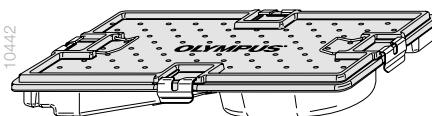
10447

Specifications

ENDOEYE HD II, 10 mm

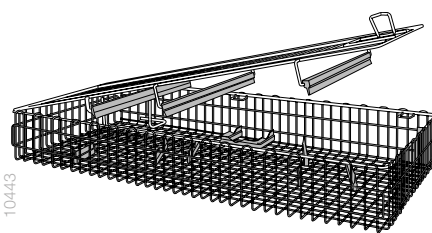
Field of view	90°
Direction of view	0° (WA50040A) 30° (WA50042A)
Depth of field	21...200 mm
Distal end outer diameter	10.0 mm
Working length	300 mm (WA50040A) 302 mm (WA50042A)
Remote control	3 buttons on handle
Reprocessing methods	Autoclave, ETO, STERRAD, washer-disinfector
Special light observation	NBI
Fog-free function	Yes

Accessories



10442

Sterilization tray, for ENDOEYE video telescopes, WA05955A



10443

Instrument tray, wire basket, for ENDOEYE, WA05938A

Specifications, design, and accessories are subject to change without any notice or obligation on the part of the manufacturer.