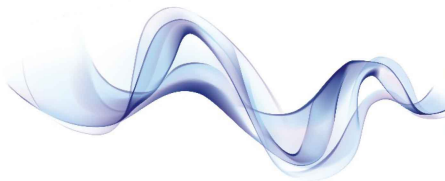




M9500

Multi-Parameter Patient Monitor



General:

Size and Weight

- Size: 366 x 335 x 172 mm
- Weight: (5.5 kg)

Display

- 15" Color TFT LCD
- Resolution: 1024 x 768 pixels

Power Supply:

- Input voltage: AC: 100~240V, 50Hz/60Hz
- Input power: ≤100VA
- Input current: 1.0 ~ 0.45A
- Safety class: Category I

Battery

- Type: 11.1V 4000mAh rechargeable lithium ion battery
- Operating time: ≥120 minutes (under normal use and full charged)
- Charge time: ≤ 6h

Thermal Recorder (Optional)

- Method: thermal dot array
- Paper width: 50mm (1.97 inch)
- Paper speed: 12.5/25/50 mm/sec
- Traces maximum: 3 tracks

System output

- Ethernet network standard RJ45 port
- Nurse call
- Analog output (ECG or IBP): optional
- Defibrillation output: optional

Alarm

- Three levels: Low, Medium & High
- Indication: auditory & visual
- Setup: default & custom
- Silence: all alarms can be silenced
- Volume: 45 ~ 85 dB measured at 1 meter

Trend

- Store & review 168 hours trend data and trend maps
- Parameter option: HR, SpO2, NIBP, PR, Resp, CO2, Temp1, Temp2, IBP1, IBP2, ST.
- Cycle intervals of trend storage 1min, 2min, 3min, 4min, 5min, 10min, 15min, 20min, 25min, 30min

Store & Reviewing

- ECG: 30 minutes one important lead' s ECG waveform
- Alarm: 1800 groups alarm events reviewing
- NIBP: 1000 groups NIBP measurement
- Arrhythmia: 128 groups data (8 seconds ECG waveform)
- Power-off storage: 72 hours trend data & ECG waveform (optional)

Environmental Specifications

- Working temperature: 5 ~ 40°C
- Transportation and storage temperature: -20 ~ 55 °C
- Relative humidity: Working ≤85%
- Transportation and storage ≤93%
- Atmospheric pressure: Working 700 ~ 1060 hPa
- Transportation and storage 500 ~ 1060 hPa

ECG

- Mode: 5-leads (standard) or 3-leads (optional)
- Lead selection: I, II, III, aVR, aVL, aVF, V1~V6 (optional)
- Gain: AUTO, 0.25x, 0.5x, 1.0x, 2.0x, 4.0x
- Insulation breakdown voltage 4000VAC 50/60Hz
- Sweep speed 6.25mm/s, 12.5mm/s, 50mm/s
- HR range: Adult: 10 ~ 300bpm
- Child & Neonate: 10 ~ 350bpm
- HR accuracy ± 1% or ± 1bpm, whichever is greater

ST segment

- Measurement range: -2.0mV ~ 2.0mV
- Resolution: 0.01mV

RESP

- Method: Impedance variation between RA-LL (R-F)
- Measurement range: 0~150rpm
- Accuracy: ±2rpm
- Gain: x1, x2, x4
- Sweep speed: 6.25mm/s, 12.5mm/s, 25mm/s

TEMP

- Measurement range: 0.0 ~ 50.0°C
- Unit: Celsius (°C), Fahrenheit (°F)
- Accuracy: ± 0.1°C (0.18°F) (original probe)
- Connecting cable: Compatible with YSI-400

Performance:

Biolight Digital SpO2

- Measurement range (0~100)%
- Accuracy: ±2% (70%~100%)
- Unspecified (0~34%)
- PR range 25~250bpm
- PR accuracy ± 1% or ± 1bpm, whichever is greater

Nellcor SpO2 (Optional)

- Measurement range (0~100)%
- Accuracy: ±2% (70%~100%) (adult)
- ±3% (70%~100%) (neonate)
- ±2% (70%~100%) (low perfusion)
- Unspecified (0~69%)

Masimo SpO2 (Optional)

- Measurement range (0~100)%
- Resolution: 1%
- Accuracy: ±2% (70%~100%) (adult/pediatric, non-motion)
- ±3% (70%~100%) (neonate, non-motion)
- ±3% (70%~100%) (motion)
- Unspecified (0~69%)°C

NIBP

- Technique: Automatic oscillometry
- Range: Adult: 10~270mmHg
- Child: 10~235mmHg
- Neonate: 10~135mmHg
- Accuracy: Static ±2% or ±3mmHg, whichever is greater
- Unit: mmHg, kPa
- Pulse rate range: 40-240bpm
- Intervals of AUTO measurement: 1, 2, 3, 4, 5, 10, 15, 30, 60, 90 minutes, 2, 4, 8, hours

IBP (optional)

- Channel: 2
- Measurement range: -50 ~ 300mmHg
- Unit: mmHg, kPa
- Accuracy: ±2% or ±2mmHg, whichever is greater

EtCO2 (Sidestream (Microstream), Respironics LoFlo™)

- Measure method: Infrared spectrum
- Warm up time: Capnogram displayed in less than 20 secs, at an ambient temperature of 25°C(77°F), full specifications within 2 mins
- Measurement range: 0.0 ~ 19.7% (0 ~ 150mmHg)
- Resolution: 1mmHg
- Unit: %, mmHg, kPa
- CO2 accuracy: 0 - 40mmHg, ± 2mmHg
- 41 - 70mmHg, ± 5% or reading
- 71 - 100mmHg, ± 8% or reading
- 101 - 150mmHg, ± 10% or reading
- (at 760mmHg, ambient temperature of 25°C (77°F)
- (when Rr > 80rpm, all the range is ± 12% or reading)

- CO2 response time: < 3s

- awRR measurement range: 2 - 150rpm
- awRR measurement accuracy: ± 1rpm
- Sample flow rate: 50 ml/mm ± 10 ml/min

EtCO2 (Mainstream, Respironics Capnostat 5™)

- Measure method: Infrared spectrum
- Warm up time: Capnogram displayed in less than 15 secs, at an ambient temperature of 25°C(77°F), full specifications within 2 mins
- Measurement range: 0.0 ~ 19.7% (0 ~ 150mmHg)
- Resolution: 1mmHg
- Rise time: (10 /min): ≤ 60ms
- Unit: %, mmHg, kPa
- CO2 accuracy: 0 - 40mmHg, ± 2mmHg
- 41 - 70mmHg, ± 5% or reading
- 71 - 100mmHg, ± 8% or reading
- 101 - 150mmHg, ± 10% or reading
- (at 760mmHg, ambient temperature of 35°C (95°F)
- awRR measurement range: 0 - 150rpm
- awRR measurement accuracy: ± 1rpm

*Specifications subject to change without prior notice

Standard Configuration: ECG, HR, RESP, NIBP, Biolight Spo2, PR, 2-TEMP, Lithium Battery

Optional: Nellcor SpO2, Masimo SpO2, 2-IBP, Microstream EtCO2 (LoFlo), Mainstream EtCO2 (Capnostat 5), VGA output, Recorder



BLT Medical USA, LLC

1276 Rothwell Drive, Troy MI 48084

Tel: 630-537-0168 Email: sales@bltmedical.com

