

A comprehensive selection of transducers

Curved array transducers



C2-8

- Applications : abdomen, obstetrics, gynecology, renal, fetal heart
- Field of view : 68.17°

C2-4 / 20

- Applications : abdomen, cardiac
- Field of view : 90.52°

CN2-8

- Applications : abdomen, obstetrics, gynecology, renal, fetal heart
- Field of view : 60.35°

CN4-9

- Applications : neonatal, pediatric, vascular
- Field of view : 146.5°

Linear array transducers



LN5-12

- Applications : small parts, breast, vascular, musculoskeletal
- Field of view : 38.1mm

LN5-12/40

- Applications : small parts, breast, vascular, musculoskeletal
- Field of view : 40mm

L5-12/60

- Applications : small parts, breast, vascular, musculoskeletal
- Field of view : 60.096mm

Endocavity transducers



EVN4-9

- Applications : obstetrics, gynecology, urology
- Field of view : 148°

EC4-9

- Applications : obstetrics, gynecology, urology
- Field of view : 146.5°



Scan code or visit
www.samsungmedison.com
to learn more

SAMSUNG MEDISON CO., LTD.

© 2014 Samsung Medison All Rights Reserved.
Samsung Medison reserves the right to modify the design, packaging, specifications, and features shown herein, without prior notice or obligation.

Samsung Ultrasound SONOACE R5

Practical, efficient, comfortable diagnosis



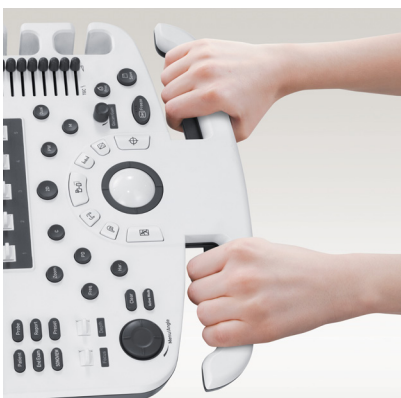
SAMSUNG

Practical, efficient, comfortable diagnosis

The SONOACE R5 is designed to provide you not only the diagnostic functions, but also the great user convenience. Ergonomic design, improved user interface and the quality of its everyday functions, such as QuickScan™, FSI™, and THI, will enable you to extend your diagnostic boundaries while enjoying a more comfortable working environment.



15-inch LED monitor



Lifting control panel



Front and rear handles



More convenient and comfortable working environment

The SONOACE R5 is a slim and compact ultrasound system, featuring ergonomic design. The lifting control panel, front and rear handles and lightweight system make the SONOACE R5 move easily and be used in any situation. The improved user interface and customizable menus provide the high quality of working environment.

- Lifting control panel
- Front and rear handles
- Slim and lightweight
- 15-inch LED monitor
- Backlit keyboard

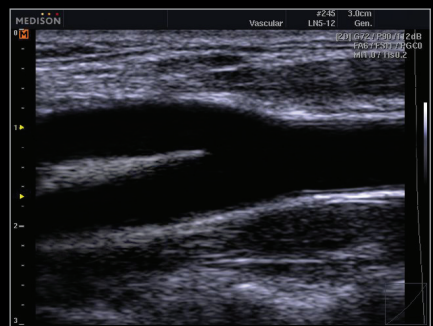
More practical capabilities for ultrasound diagnosis

The SONOACE R5 ultrasound system provides versatile performance for its compact design. The various measurement packages and the advanced user interface performance deliver quick and easy observation. Full Spectrum Imaging™ is one of the imaging features which gives improved images to help users for better diagnosis.

- QuickScan™
- Multiple measurement packages
- THI (Tissue Harmonic Image)
- FSI™ (Full Spectrum Imaging)

Multiple transducers to enable extended diagnosis

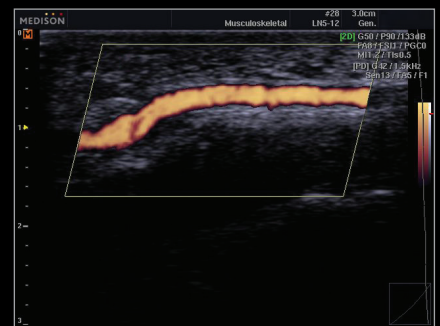
The SONOACE R5 supports linear and curved array transducers, extending your diagnostic capabilities.



Carotid artery



Gallbladder stone



Hand with power Doppler