

A comprehensive selection of transducers

Curved array transducers



CN2-8

- Applications : abdomen, obstetrics, gynecology, renal, fetal heart
- Field of view : 60.35°



C2-4 / 20

- Applications : abdomen, cardiac
- Field of view : 90.52°



CN4-9

- Applications : neonatal, pediatric, vascular
- Field of view : 146.5°



C2-8 (2port system only)

- Applications : abdomen, obstetrics, gynecology, renal, fetal heart
- Field of view : 68.17°



C2-5 (2port system only)

- Applications : abdomen, obstetrics, gynecology, renal, fetal heart
- Field of view : 47.7°

Linear array transducers



LN5-12/40

- Applications : small parts, breast, vascular, musculoskeletal
- Field of view : 40mm



L5-12/60

- Applications : small parts, breast, vascular, musculoskeletal
- Field of view : 60mm



LE5-12

- Applications : small parts, breast, vascular, musculoskeletal
- Field of view : 38.1mm



LN5-12 (2port system only)

- Applications : small parts, breast, vascular, musculoskeletal
- Field of view : 38.1mm

Endo-cavity transducers



EC4-9

- Applications : obstetrics, gynecology, urology
- Field of view : 146.5°



EVN4-9 (2port system only)

- Applications : obstetrics, gynecology, urology
- Field of view : 148°



Scan code or visit
www.samsungmedison.com
to learn more

SAMSUNG MEDISON CO., LTD.

© 2014 Samsung Medison All Rights Reserved.
Samsung Medison reserves the right to modify the design, packaging, specifications, and features shown herein, without prior notice or obligation.

Samsung Ultrasound SONOACE R3

Quality and value in portable color ultrasound



SAMSUNG

A new standard in portable color ultrasound

We set a new standard in portable color ultrasound with the SONOACE R3, an exceptional portable color ultrasound system that displays higher image quality for various applications. Although small and compact, the SONOACE R3 offers you diagnostic capabilities.



Create your own workspace, in any environment

The SONOACE R3 is portable and is capable of performing the important ultrasound functions.

- FSI™ (Full Spectrum Imaging™)
- SRF™ (Speckle Reduction Filter™)
- QuickScan™
- Harmonic Imaging

Arrange your workspace

The basic review, analysis, networking, and archiving capabilities of the SonoView™ provide the advanced diagnostic tools to boost performance.

- SonoView™
- DICOM 3.0
- USB 2.0

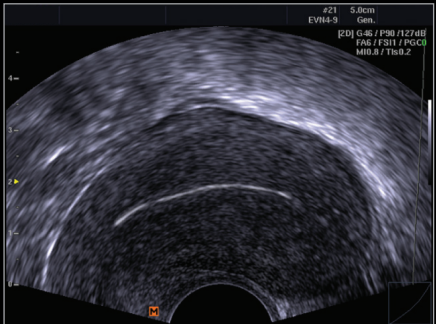
Expand your imaging capacities

The SONOACE R3 utilizes useful features, such as backlit keys, and a cart with transducer holders to deliver high performance that can be used anywhere.

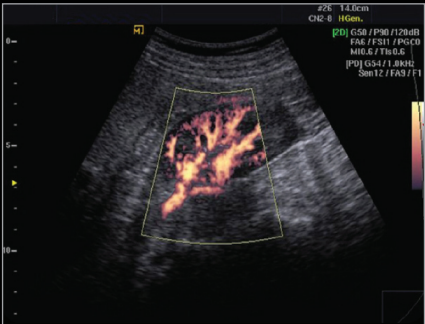
- 15-inch LED monitor
- Two transducer ports (option)
- Easily height-adjustable cart-based system
- Lightweight



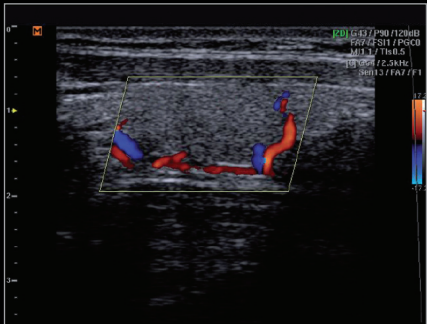
The SONOACE R3 is a portable digital color ultrasound system with imaging capabilities comparable to those of a bigger-sized system.



Uterus



Kidney with power Doppler



Thyroid with color Doppler

